

LEVOLOR®

COMMERCIAL

Roller Shades

LV Classics

OPENNESS FACTOR

1%, 3%, 5%

UV BLOCKAGE

Approximately 95% to 99%

COMPOSITION

25% Polyester / 75% Vinyl on Polyester

WIDTH

78" (200 cm), 98" (250 cm), 118" (300 cm)

WEIGHT

1% 15.28 oz/yd² (518 g/m²) ± 5%

3% 13.12 oz/yd² (445 g/m²) ± 5%

5% 12.39 oz/yd² (420 g/m²) ± 5%

THICKNESS

1% 0.026" (0.68 mm) ± 5%

3% 0.022" (0.57 mm) ± 5%

5% 0.022" (0.55 mm) ± 5%

FIRE CLASSIFICATIONS

NFPA 701-10 TM#1

California U.S. Title 19

M1

B1

B2

ENVIRONMENTAL BENEFITS

GREENGUARD

GREENGUARD Gold

BACTERIAL & FUNGAL RESISTANCE

ASTM G21 and ASTM G22

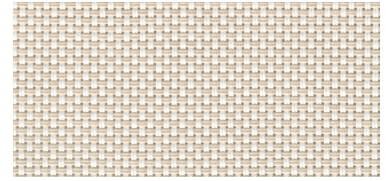
CARE & CLEANING

Remove dust with a vacuum cleaner or compressed air.

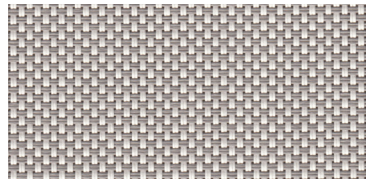
Do not scrub. Do not use solvents or any abrasive substance which might damage the coating of the fabric. Clean with a sponge or a soft brush dipped in soapy water using mild detergent. Rinse with clean water. Leave the shade down until completely dry. You can also very gently rub the fabric with a clean white pencil eraser to remove small stains.



T001 OYSTER



T002 OYSTER/BEIGE



T003 OYSTER/PEARL GRAY



T901 CHARCOAL



T902 CHARCOAL/CHESTNUT



T903 CHARCOAL/GRAY