

### T Screen Deco

#### OPENNESS FACTOR

1%, 3%, 5%

#### UV BLOCKAGE

Approximately 95% to 99%

#### COMPOSITION

36% Polyester / 64% Vinyl

#### WIDTH

122" (310 cm)

#### WEIGHT

1% 13.76 oz/yd<sup>2</sup> (467 g/m<sup>2</sup>) ± 5%

3% 12.98 oz/yd<sup>2</sup> (440 g/m<sup>2</sup>) ± 5%

5% 11.89 oz/yd<sup>2</sup> (403 g/m<sup>2</sup>) ± 5%

#### THICKNESS

1% 0.028" (0.72 mm) ± 5%

3% 0.028" (0.71 mm) ± 5%

5% 0.028" (0.70 mm) ± 5%

#### FIRE CLASSIFICATIONS

NFPA 701-10 TM#1

California U.S. Title 19

CAN/ULC-S109-03 Small Flame Test

#### ENVIRONMENTAL BENEFITS

GREENGUARD Gold

RoHS - Lead Free

#### ACOUSTICAL VALUE

1% NRC - 0.10 SAA - 0.11

3% NRC - 0.15 SAA - 0.14

5% NRC - 0.10 SAA - 0.08

#### BACTERIAL & FUNGAL RESISTANCE

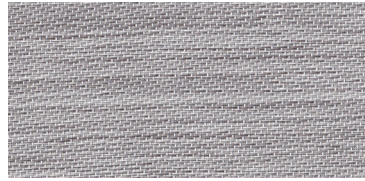
ASTM E2180

ASTM G21

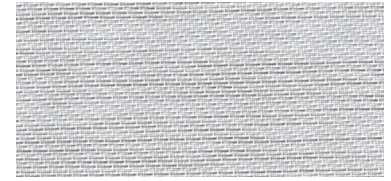
#### CARE & CLEANING

Remove dust with a vacuum cleaner or compressed air.

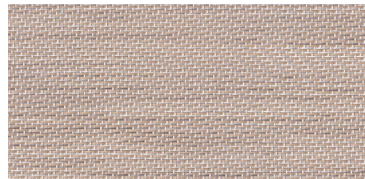
Do not scrub. Do not use solvents or any abrasive substance which might damage the coating of the fabric. Clean with a sponge or a soft brush dipped in soapy water using mild detergent. Rinse with clean water. Leave the shade down until completely dry. You can also very gently rub the fabric with a clean white pencil eraser to remove small stains.



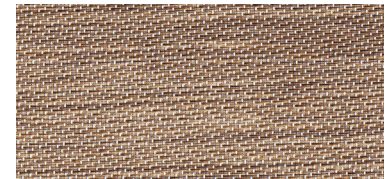
D088 TOFFEE



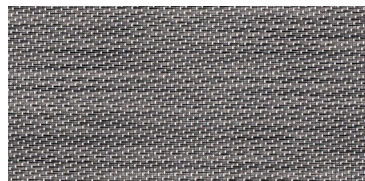
D064 CREAM



D065 CAPPUCCINO



D067 MOCHA



D066 ESPRESSO